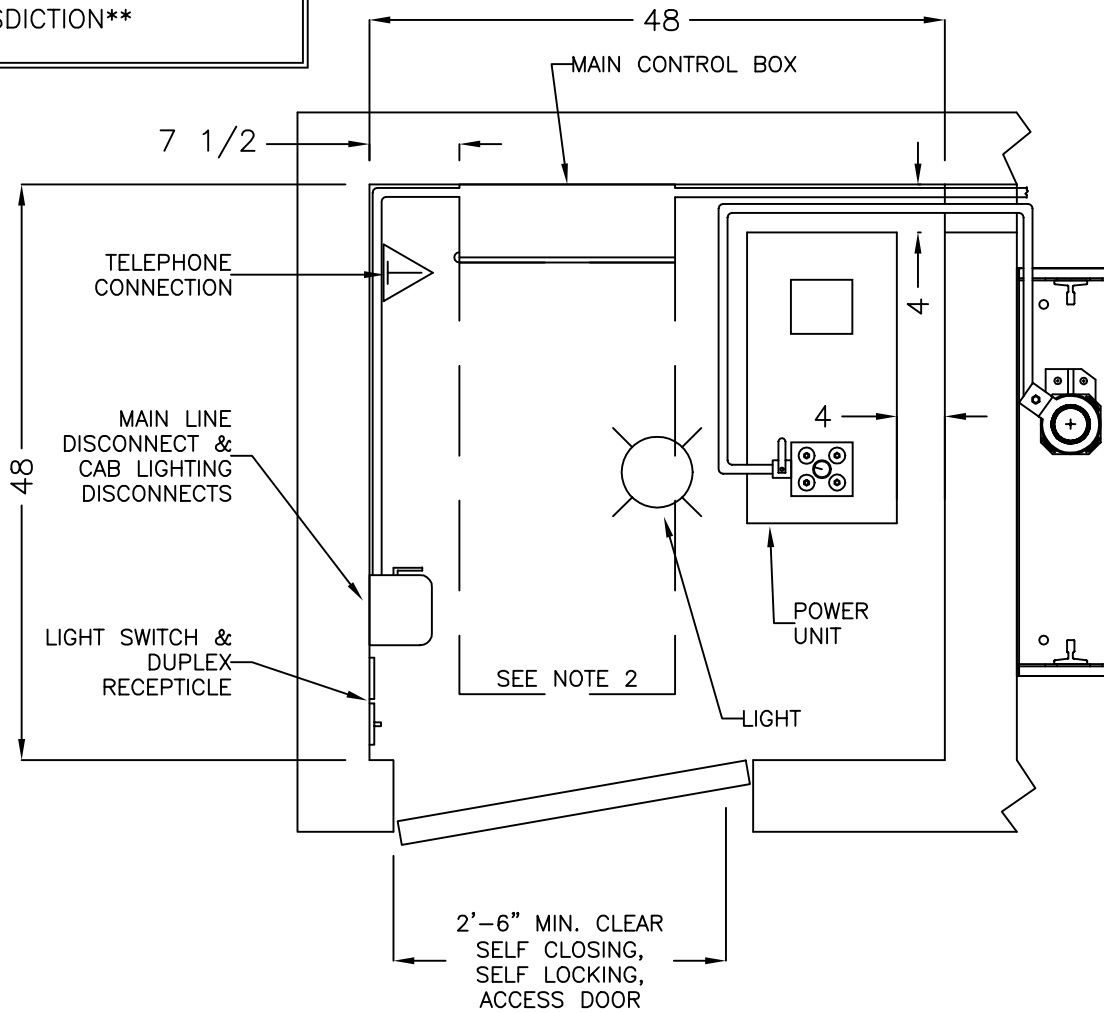


**\*\*DEALER IS RESPONSIBLE FOR INSURING THAT THE MACHINE SPACE LAYOUT AND THE MACHINE LOCATION MEET CODE REQUIREMENTS IMPOSED BY LOCAL AUTHORITY HAVING JURISDICTION\*\***



**NOTES:**

- 1) LOCAL, STATE, & NATIONAL CODES MUST ALWAYS BE FOLLOWED.
- 2) 3'-0" MINIMUM CLEARANCE IN FRONT OF THE CONTROL PANEL REQUIRED BY N.E.C.
- 3) DISCONNECT SWITCHES AND LIGHT SWITCH TO BE LOCATED ON THE STRIKE SIDE OF THE MACHINE ROOM DOOR.
- 4) MAIN LINE DISCONNECT TO BE FUSED AND CAPABLE OF BEING LOCKED IN THE OPEN POSITION.
- 5) CAB LIGHT DISCONNECT TO BE CAPABLE OF BEING LOCKED IN THE OPEN POSITION AND HAVING OVERCURRENT PROTECTION MEANS IN THE MACHINE ROOM.
- 6) THE PUMP UNIT SHOULD NOT BE OVER 40' AWAY FROM THE CYLINDER.

**\*\*MAIN LINE DISCONNECT & CAB LIGHT DISCONNECT BY OTHERS\*\***

MAIN LINE DISCONNECT  
3 POLES  
(1 FOR BATTERY LOWERING)

CAB LIGHT DISCONNECT  
1 POLE

MAIN CONTROL BOX  
24"H X 18"W X 6½"D

SUBMERGED POWER UNIT  
35"H X 24¼"W X 12½"D

**NATIONAL WHEEL-O-VATOR**  
509 W. FRONT ST. ROANOKE, ILLINOIS 61561 800-551-9095

HYDRAULIC MACHINE ROOM LAYOUT  
DESTINY RESIDENTIAL ELEVATOR - EL-2011C

SCALE: NONE	DATE: 07/02/01	DRAWN BY: DRAWING NUMBER: EL-2011C
----------------	-------------------	--

DEALER:

JOB: