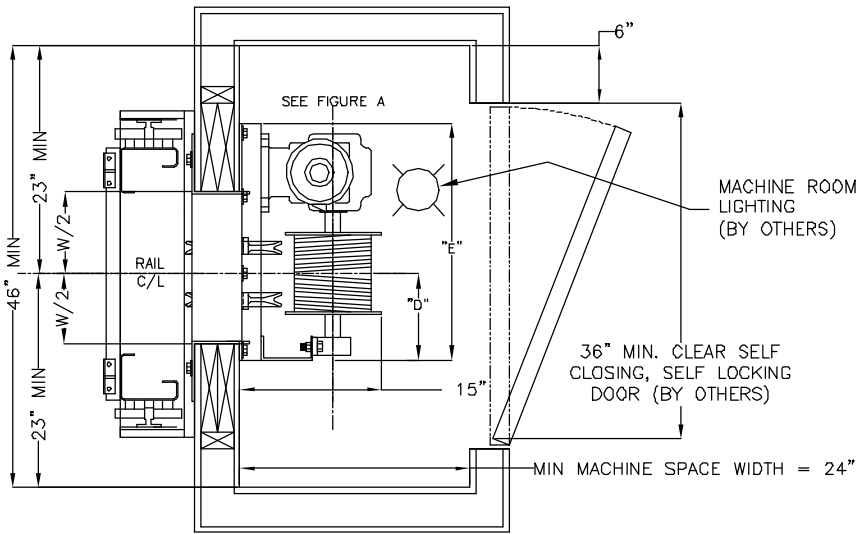


MAX TRAVEL (IN FEET)	8'	10'	12'	14'	16'	18'	20'	22'	24'	25'	27'	29'	31'	33'	35'	37'	39'	41'	43'	44'	46'	48'	50'
STARTING WRAPS	4	3	2	1	5	4	3	2	1	5	4	3	2	1	5	4	3	2	1	4	3	2	1
$K_{min} = (K1 + K2)_{min}$	56"	56"	56"	56"	56"	56"	56"	56"	56"	56"	59"	66"	74"	81"	85"	92"	99"	106"	113"	116"	124"	131"	138"
DRUM LENGTH	8"				12"				16"				20"				23"						
DRUM C/L "D"	8 3/4"				10 3/4"				12 3/4"				16 1/4"				16 1/4"						
MACHINE BASE "E"	24 1/2"				28 1/2"				33 1/8"				39 1/2"				39 1/2"						
WALL CUTOUT WIDTH "W"	17"				17"				17"				25"				25"						



****MAIN LINE DISCONNECT & CAR LIGHT DISCONNECT BY OTHERS****

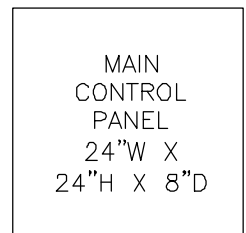
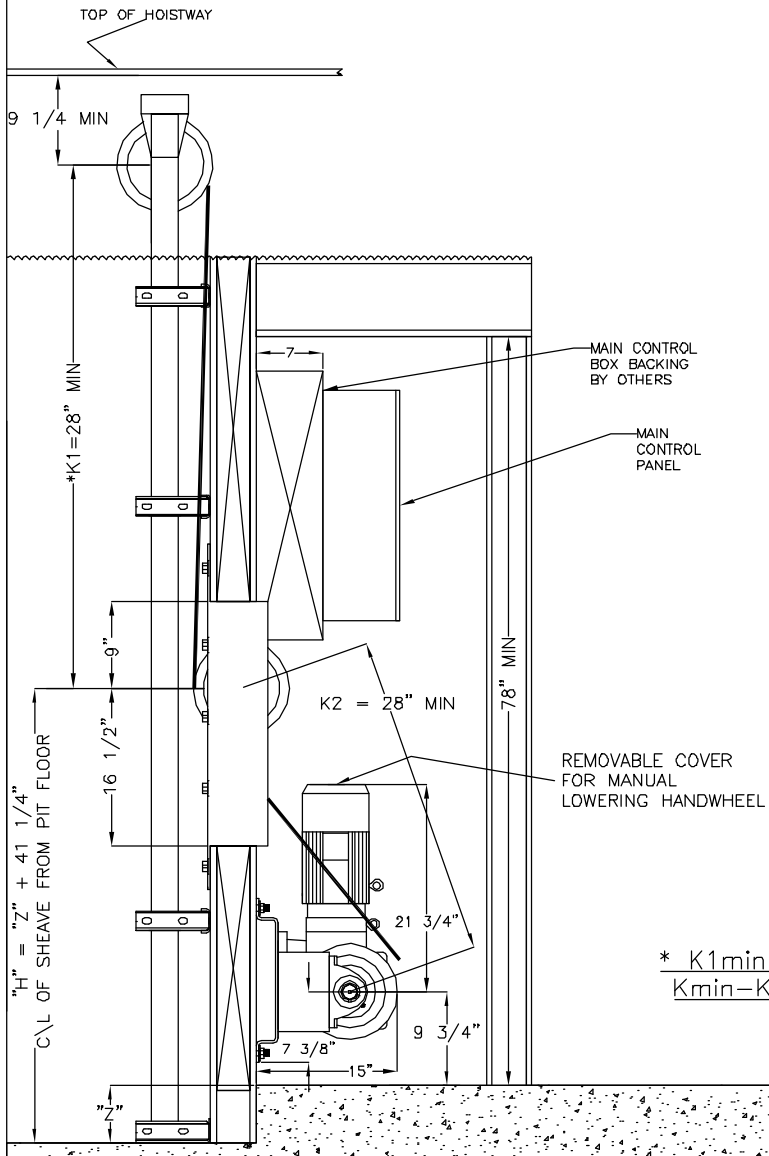
MAIN LINE DISCONNECT
3 POLE
(1 FOR BATTERY DISCONNECT)

CAR LIGHT DISCONNECT
1 POLE

****DEALER IS RESPONSIBLE FOR ENSURING THAT THE MACHINERY SPACE LAYOUT AND THE MACHINE LOCATION MEET CODE REQUIREMENTS IMPOSED BY THE LOCAL AUTHORITY HAVING JURISDICTION.****

NOTES:

- 1) 78" MINIMUM HEADROOM.
- 2) 3'-0" DEEP x 2'-6" WIDE MINIMUM CLEARANCE IN FRONT OF THE CONTROL PANEL AND DISCONNECTS REQUIRED BY N.E.C.
- 3) DISCONNECT SWITCHES AND LIGHT SWITCH TO BE LOCATED ON THE STRIKE SIDE OF THE MACHINE ROOM DOOR.
- 4) MAIN LINE DISCONNECT TO BE FUSED AND CAPABLE OF BEING LOCKED IN THE OPEN POSITION.
- 5) CAR LIGHT DISCONNECT TO BE CAPABLE OF BEING LOCKED IN THE OPEN POSITION AND HAVING OVERCURRENT PROTECTION MEANS IN THE MACHINE ROOM.
- 6) MANUAL LOWERING INSTRUCTIONS MUST BE POSTED WITHIN SIGHT OF THE MACHINE.



INVERTER DRIVE

MAIN LINE DISC.

CAR LIGHT DISC.

FIGURE A

$$* K1_{min} = \frac{K_{min} - K2}{2}$$

NATIONAL WHEEL-O-VATOR
 509 W. FRONT ST. ROANOKE, ILLINOIS 61561 800-551-9095
 RMR MACHINE ROOM (WALL MOUNT)
 DESTINY RESIDENTIAL ELEVATOR EL-2108
 SCALE: NONE DATE: 10/27/03 DRAWN BY: DH DRAWING NUMBER: EL-2108
 DEALER:
 JOB: